

## ELAD ASA-16

### Antenna splitter amplifier



#### Use.

The ASA16 Splitter Amplifier has been designed to split the signal received from an antenna to up to six different receivers at the same time. Thanks to the inside divider and ultra-wideband low noise amplifiers, the antenna signal can be shared with the receivers connected to the six outputs. The six outputs have 0 dB gain (no amplification). A 15 dB attenuator is available to allow radio monitoring power sources.

## Connections and operations

### Power supply.

To power on the device simply connect a 12V DC – 300 mA power supply with the power connector on the rear panel of the ASA-16. The power status is indicated by the ON Led on the front panel.

### Input connection.

Connect the receiving antenna cable with the Input 50 Ohm BNC Coax connector located on the rear panel.

### Output connections.

Connect each one of the receivers with one of the Output 50 Ohm BNC Coax connectors labeled 1 to 6 located on the rear panel.

### Input attenuator.

A 15dB attenuator can be inserted on the input line by operating the related switch on the front panel. The INPUT led will light on to indicate the insertion of the attenuator.

### Output off.

The OUTPUT OFF led will light on when the PTT input on the rear panel is connected to ground. The PTT input is a 3.5 mm stereo jack connector.



The PTT line is on the TIP signal.

## Packaging

The package includes :

- the ASA-16 device,
- a cable for the PTT connection,
- the 12V connection cable, 2.1mm DC plug to open end,
- this printed user manual.

Note : the package do not includes power supply.

## Preliminary specifications

### General specs and features.

RFIN and RFOUT connectors type : BNC.

Dimensions and weight : alu box with front and rear soft plastic, cover: 200mm x 50mm x 200mm, weight : 800gr.

### Electrical specs and performances.

Total gain for each output : 0 or -15 dB (if attenuator is connected).

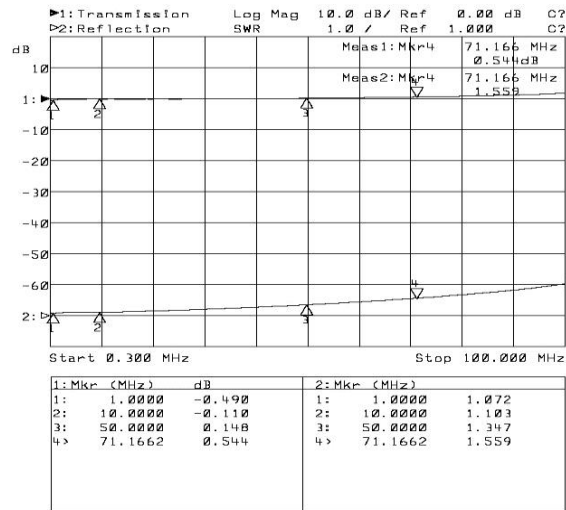
PTT input :

- grounded : switch the antenna input to ground,
- isolation :
  - o >60dB at 12 MHz,
  - o >50dB at 50 MHz.

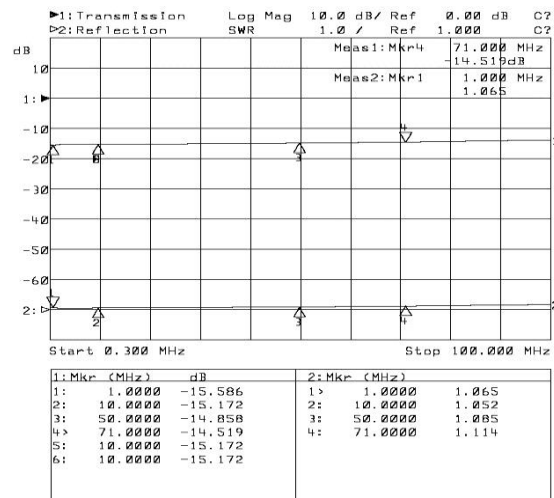
SWR input :

9KHz to 30MHz	< 1.2
30MHz to 50MHz	< 1.5
50MHz to 70MHz	< 1.6

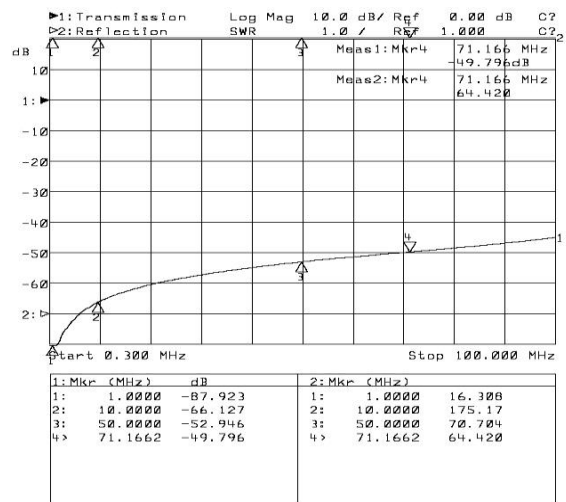
# Typical Performances



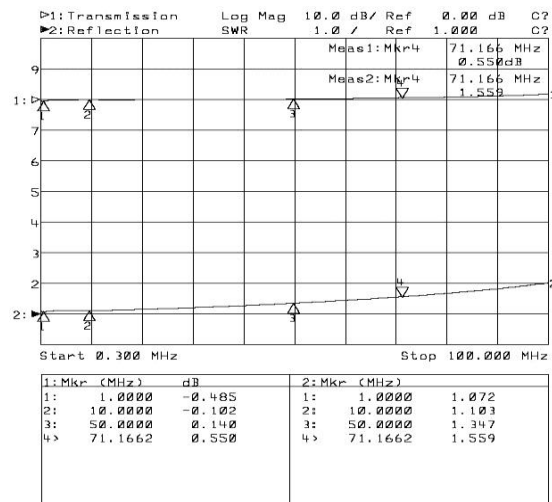
Typical channel out gain



Attenuation 15 dB

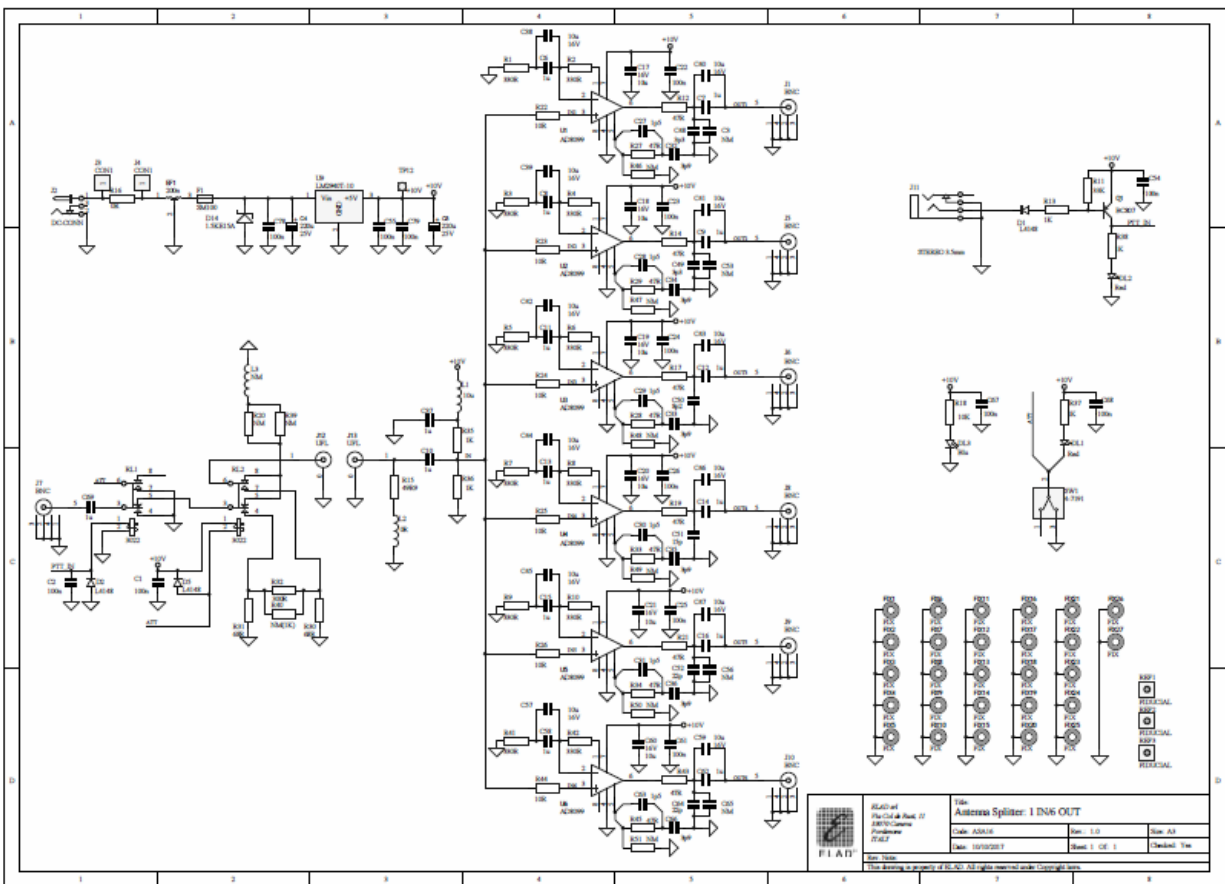


PTT Active on input



Typical SWR input

# Schematics



## Declaration of Conformity (EC)

The product marked as

# ASA-16

manufactured by

Manufacturer: ELAD S.r.l.

Address: Via Col De Rust, 11 - Sarone  
33070 CANEVA (PN)

is produced in conformity to the requirements contained in the following EC directives:

- EMC Directive 2004/108/CE
- Low Voltage Directive 2006/95/CE
- RoHS Directive 2011/65/CE

The product conforms to the following Product Specifications:

### Emissions & Immunity:

EN 55022: 2006 + A1: 2007  
EN 55024: 1998 + A1: 2001 + A2: 2003  
ETSI EN 301 489 - 1 V1.9.2  
EN 55032 - 2012  
EN 60950 -1

### Safety:

EN 60950-1: 2006 + A11: 2009

And further amendments.

This declaration is under responsibility of the manufacturer:

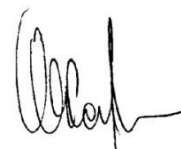
ELAD S.r.l.  
Via Col De Rust, 11 - Sarone  
33070 CANEVA (PN)

Issued by:

Name: Franco Milan  
Function: President of ELAD

Caneva  
Place

October, 30<sup>th</sup> 2017  
Date



Signature